

WILLIAMSBURG SPORTS & EVENTS CENTER

ARB CONCEPTUAL DESIGN SUBMITTAL

OCTOBER 13, 2023

The current design, scope, and programming will establish the Williamsburg Sports and Event Center as a premier destination for sports and event tourism. The venue will be an approximately 200,000 square foot indoor Sports Center in the Williamsburg – James City County – York County region. The facility will include hardcourt space to support 12 basketball courts, convertible to 24 volleyball courts, and 36 pickleball courts, with ceiling mounted basketball goals, volleyball nets, court dividers, scoreboards, and shot clocks, and able to accommodate other large sports and events activities. The Sports Center will include first-class entertainment areas meant to support tourism activity and provide additional amenities for local residents. There will be a state-of-the-art indoor rollout turf system sized to cover the entire hardcourt space providing significant flexibility allowing for indoor soccer, field hockey, football, lacrosse, amongst countless other sporting events. This turf system will fill a large demand for local programming and enhance the quality of life for the residents of the region. There will be dedicated space to support visitor, spectator, and team arrivals, gathering, viewing areas, food and beverage, administration, and registration. The Sports & Event Center will also include interactive gym and play areas along with event space capable of hosting parties and special events. There will also be adequate drop-off and parking facilities. The Sports Center will quickly become a favorite venue throughout the sports tourism industry, attracting hundreds of thousands of participants and visitors each year to Virginia's Historic Triangle.

Overall Site with Lease Lines

Archaeological No-disturbance Zone

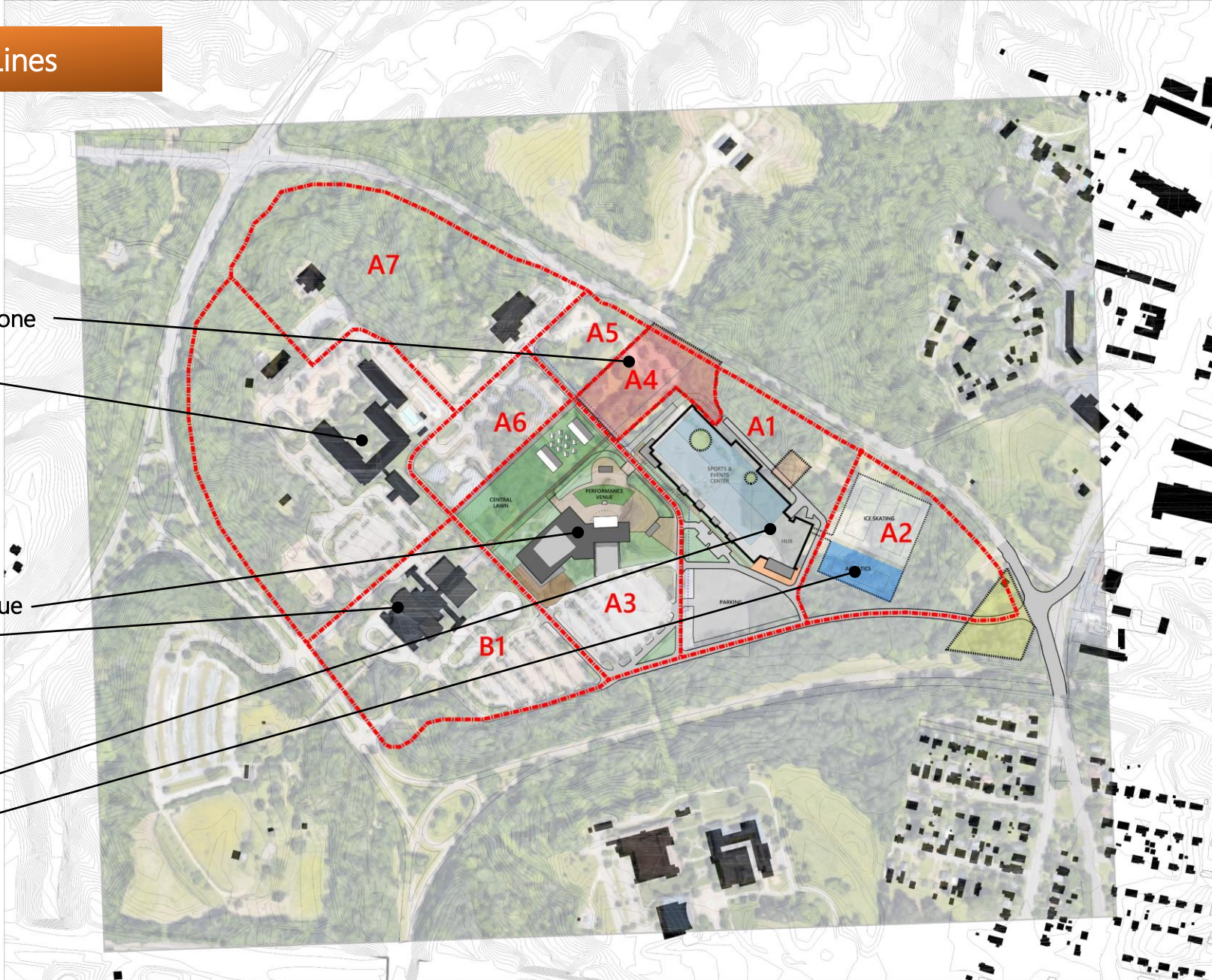
Woodlands Hotel

Potential Future Performance Venue

Visitors Center

Proposed Sports & Events Center

Potential Future Sports Venue



Site Plan



Entry Plaza Plan



First Floor Plan

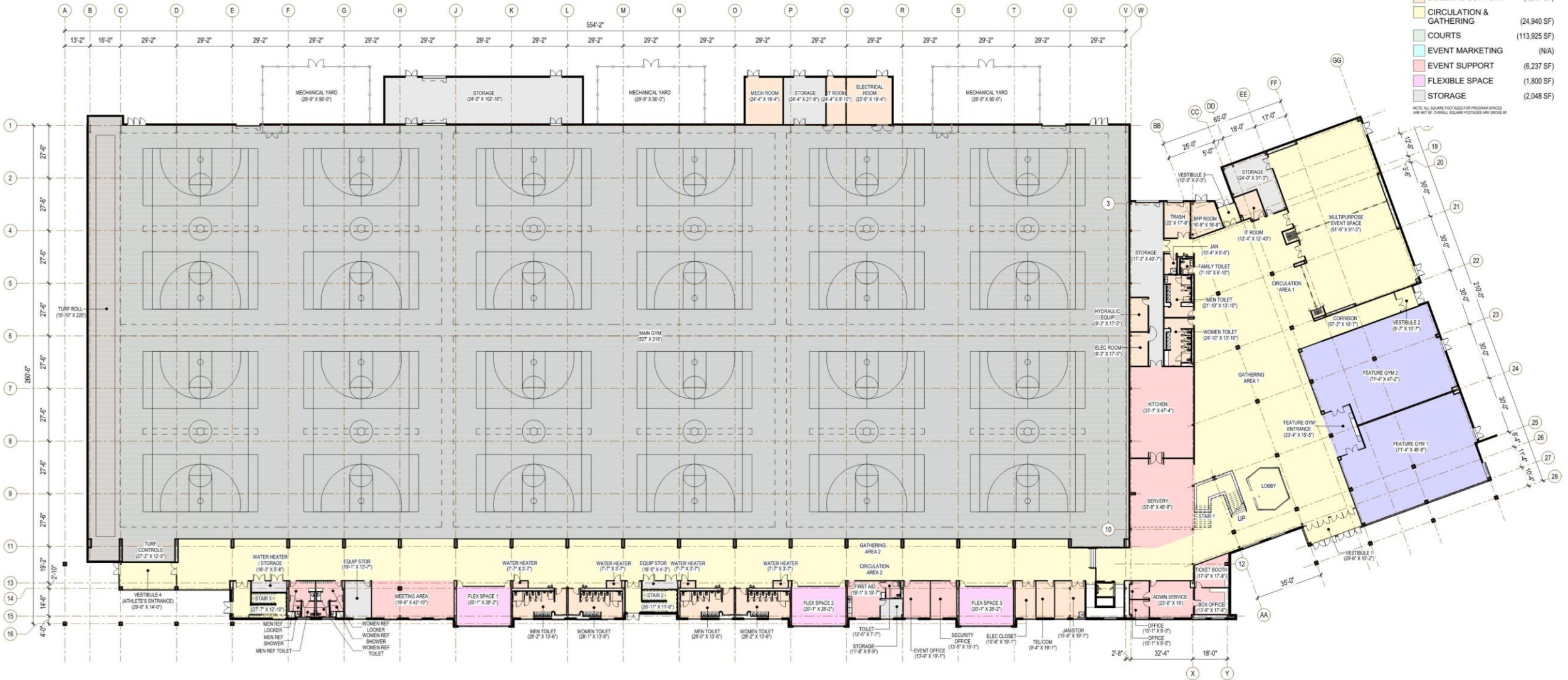
FACILITY TOTALS:

GROUND LEVEL:	175,842 GSF
MEZZANINE:	22,659 GSF
TOTAL:	198,501 GSF

LEGEND - GROUND LEVEL

AMENITIES	(16,355 SF)
BUILDING SUPPORT	(4,901 SF)
CIRCULATION & GATHERING	(24,940 SF)
COURTS	(113,925 SF)
EVENT MARKETING	(N/A)
EVENT SUPPORT	(6,237 SF)
FLEXIBLE SPACE	(1,800 SF)
STORAGE	(2,048 SF)

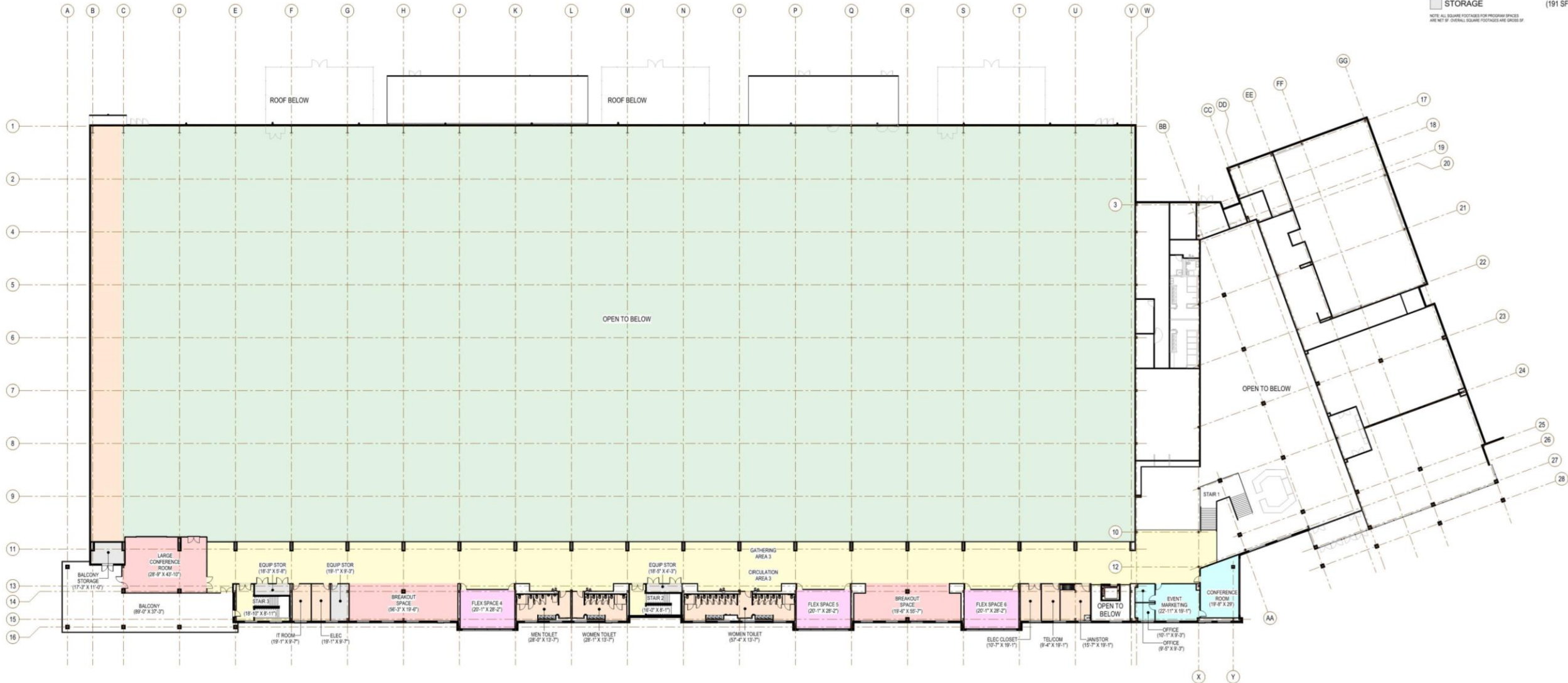
NOTE: ALL SQUARE FOOTAGES FOR PROGRAM AREAS ARE NET SF. OVERALL SQUARE FOOTAGES ARE GROSS SF.



Mezzanine Floor Plan

LEGEND - MEZZANINE	
AMENITIES	(N/A)
BUILDING SUPPORT	(2,474 SF)
CIRCULATION & GATHERING	(12,507 SF)
COURTS	(N/A)
EVENT MARKETING	(2,419 SF)
EVENT SUPPORT	(N/A)
FLEXIBLE SPACE	(2,874 SF)
STORAGE	(191 SF)

NOTE: ALL SQUARE FOOTAGES FOR PROGRAM SPACES ARE NET SF. OVERALL SQUARE FOOTAGES ARE GROSS SF.





WILLIAMSBURG
SPORTS AND
EVENTS CENTER

BOX OFFICE



WILLIAMS
SPORTS
EVENTS CENTER

BOX OFFICE

Typical Façade Articulation & Detailing



Center Stair Tower





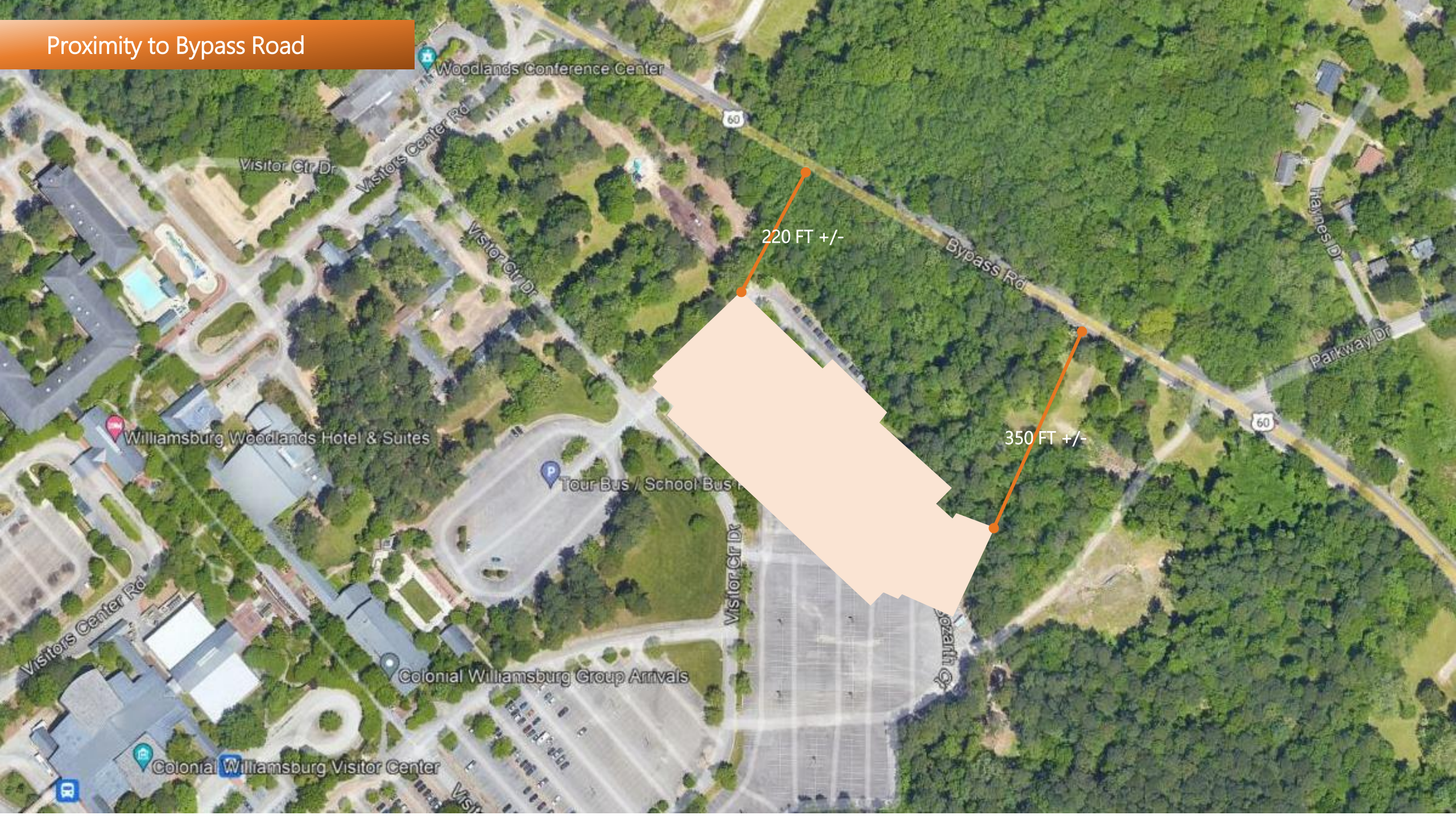
Northwest Facade



Northeast Facade



Proximity to Bypass Road



Woodlands Conference Center

Visitor Ctr Dr

Visitors Center Rd

Visitor Ctr Dr

220 FT +/-

Bypass Rd

Hayes Dr

Parkway Dr

60

350 FT +/-

Williamsburg Woodlands Hotel & Suites

Tour Bus / School Bus

Visitors Center Rd

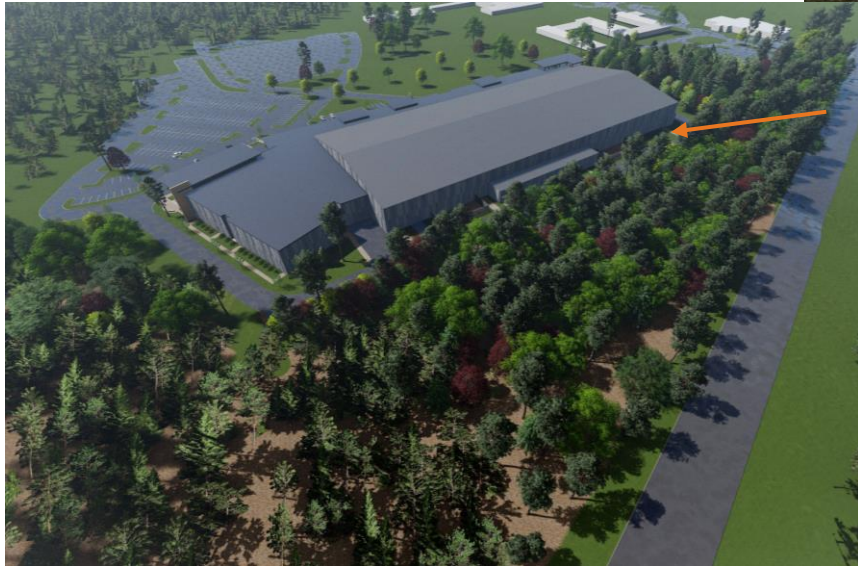
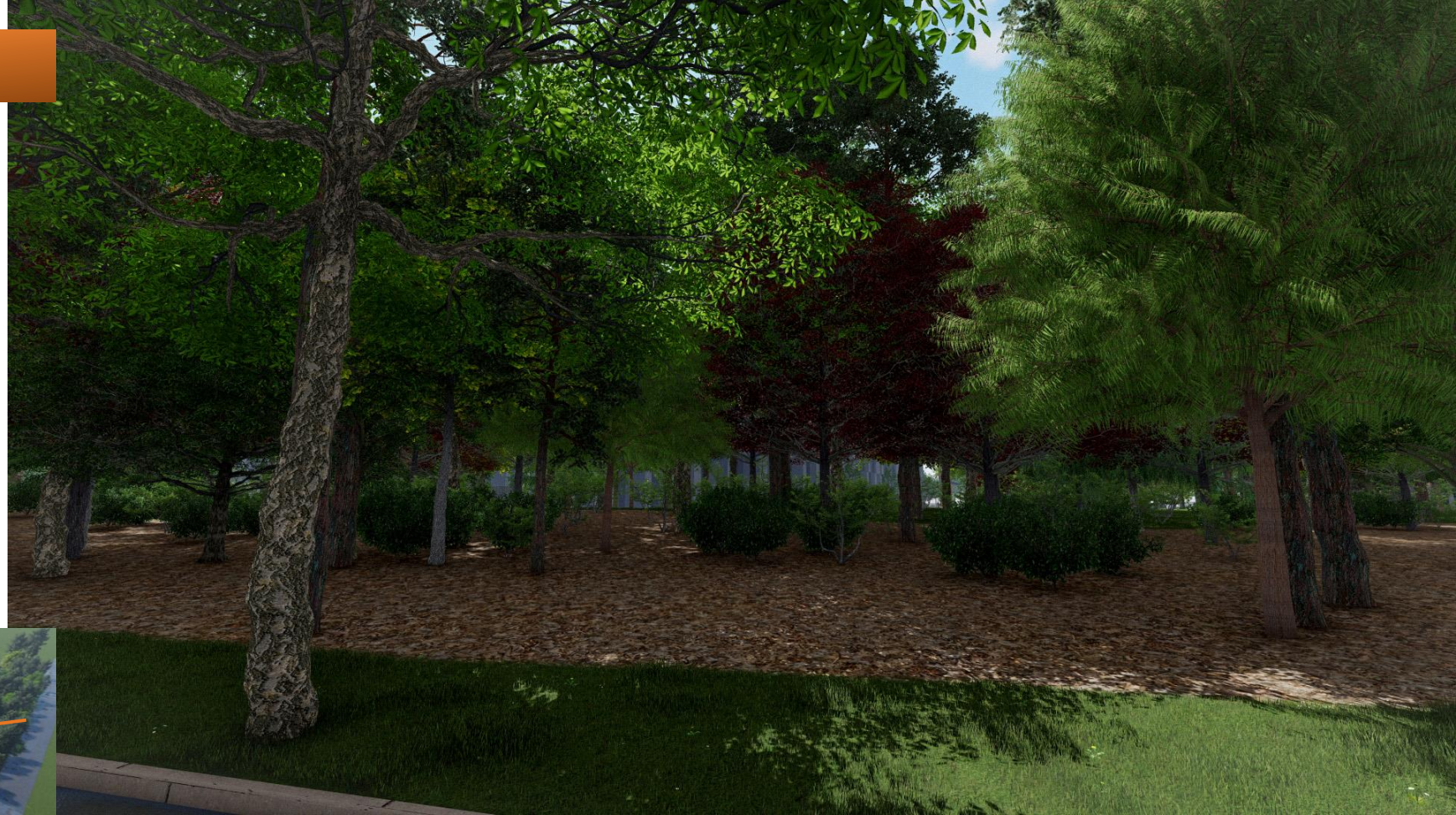
Colonial Williamsburg Group Arrivals

Colonial Williamsburg Visitor Center

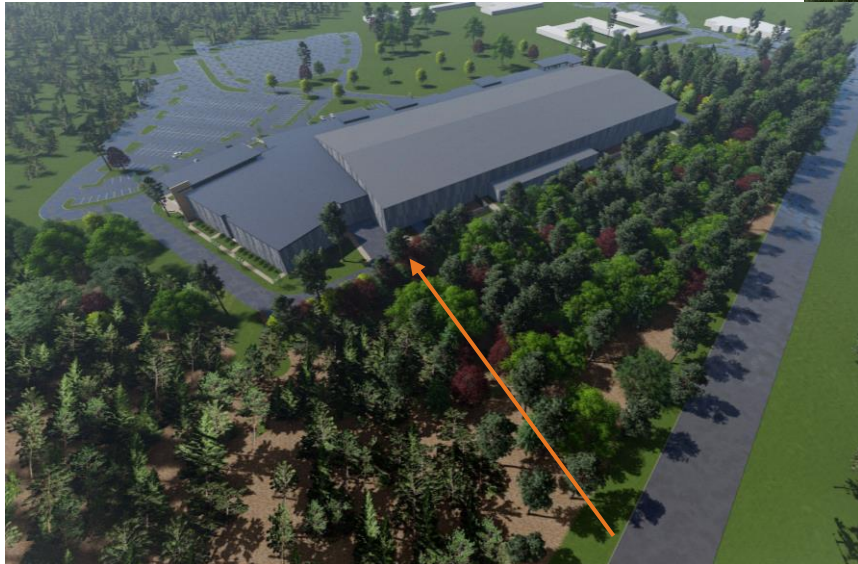
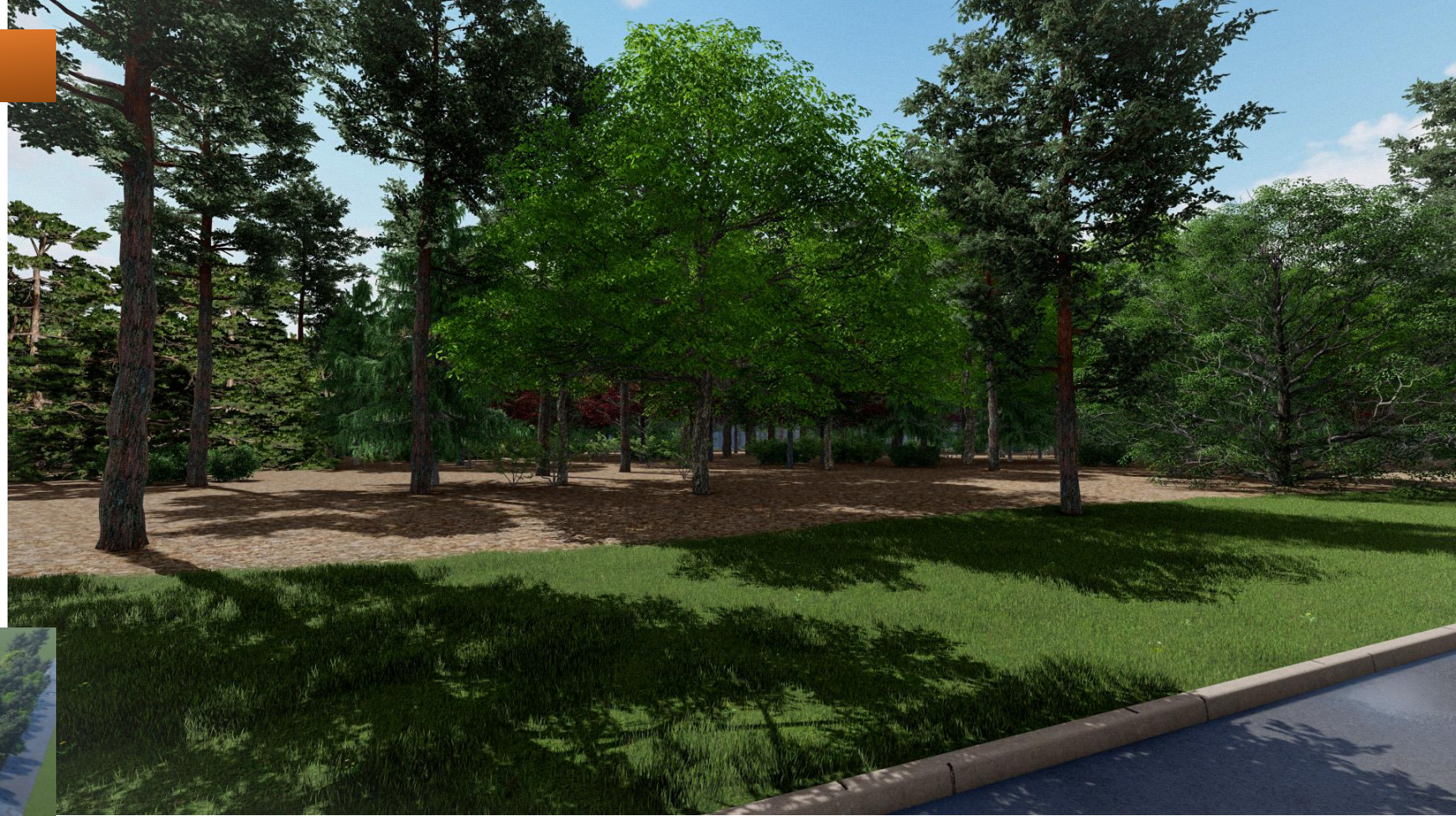
Visitor Ctr Dr

Spazio

NW View of Building from Bypass Road



NE View of Building from Bypass Road





WILLIAMSBURG
SPORTS AND
EVENTS CENTER